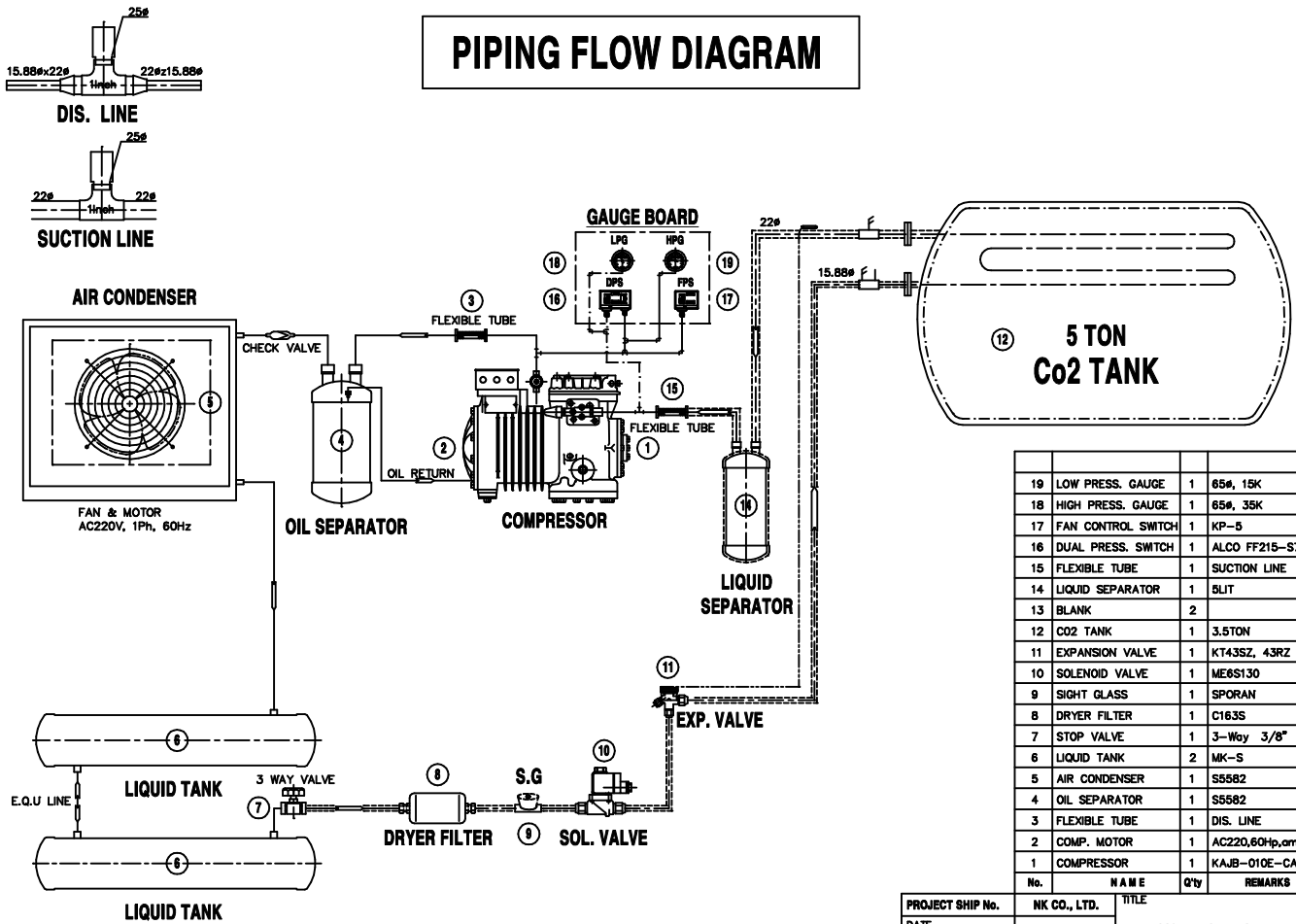


LOW PRESSURE CO2 SYSTEM REFRIGERATION DIMENSION

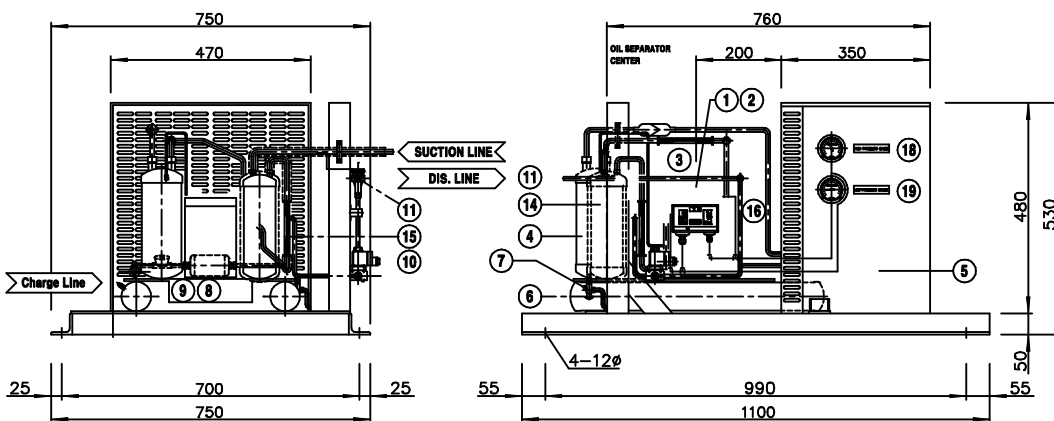
PIPING FLOW DIAGRAM



| No. | N A M E | Q'ty | REMARKS |
|-----|--------------------|------|-------------------|
| 19 | LOW PRESS. GAUGE | 1 | 65#, 15K |
| 18 | HIGH PRESS. GAUGE | 1 | 65#, 35K |
| 17 | FAN CONTROL SWITCH | 1 | KP-5 |
| 16 | DUAL PRESS. SWITCH | 1 | ALCO FF215-S7b |
| 15 | FLEXIBLE TUBE | 1 | SUCTION LINE |
| 14 | LIQUID SEPARATOR | 1 | SLIT |
| 13 | BLANK | 2 | |
| 12 | CO2 TANK | 1 | 3.5TON |
| 11 | EXPANSION VALVE | 1 | KT43SZ, 43RZ |
| 10 | SOLENOID VALVE | 1 | ME6S130 |
| 9 | SIGHT GLASS | 1 | SPORAN |
| 8 | DRYER FILTER | 1 | C163S |
| 7 | STOP VALVE | 1 | 3-Way 3/8" |
| 6 | LIQUID TANK | 2 | MK-S |
| 5 | AIR CONDENSER | 1 | S5582 |
| 4 | OIL SEPARATOR | 1 | S5582 |
| 3 | FLEXIBLE TUBE | 1 | DIS. LINE |
| 2 | COMP. MOTOR | 1 | AC220,60hp,amp1.1 |
| 1 | COMPRESSOR | 1 | KAJB-010E-CAVD01 |

| | | | |
|---------------------------|----------------|-------------------------|----------|
| PROJECT SHIP No. | NK CO., LTD. | TITLE | |
| DATE | | CO2 REFRIGERATION PLANT | |
| APPROVED BY | | PIPING FLOW DIAGRAM | |
| CHECKED BY | | SCALE | DWG. No. |
| DRAWN BY | Jong. Sam Chul | | |
| KOREA INTERCOOL CO., LTD. | | REV. No. | PAGE No. |
| KIC | | | |

REFRIGERATION UNIT



| No. | N A M E | Q'ty | REMARKS |
|-----|--------------------|------|-------------------|
| 20 | | | |
| 19 | LOW PRESS. GAUGE | 1 | 65#, 15K |
| 18 | HIGH PRESS. GAUGE | 1 | 65#, 35K |
| 17 | FAN CONTROL SWITCH | 1 | KP-5 |
| 16 | DUAL PRESS. SWITCH | 1 | ALCO FF215-S7b |
| 15 | FLEXIBLE TUBE | 1 | SUCTION LINE |
| 14 | LIQUID SEPARATOR | 1 | SLIT |
| 13 | BLANK | 2 | |
| 12 | CO2 TANK | 1 | 3.5TON |
| 11 | EXPANSION VALVE | 1 | KT43SZ, 43RZ |
| 10 | SOLENOID VALVE | 1 | ME6S130 |
| 9 | SIGHT GLASS | 1 | SPORAN |
| 8 | DRYER FILTER | 1 | C163S |
| 7 | STOP VALVE | 1 | 3-Way 3/8" |
| 6 | LIQUID TANK | 2 | MK-S |
| 5 | AIR CONDENSER | 1 | MK-S |
| 4 | OIL SEPARATOR | 1 | S.5582 |
| 3 | FLEXIBLE TUBE | 1 | DIS. LINE |
| 2 | COMP. MOTOR | 1 | AC220,60hp,amp1.1 |
| 1 | COMPRESSOR | 1 | KAJB-010E-CAVD01 |

| | | | |
|---------------------------|--------------|-------------------------|----------|
| PROJECT SHIP No. | NK CO., LTD. | TITLE | |
| DATE | | CO2 REFRIGERATION PLANT | |
| APPROVED BY | | UNIT DWG. | |
| CHECKED BY | | SCALE | DWG. No. |
| DRAWN BY | | | |
| KOREA INTERCOOL CO., LTD. | | REV. No. | PAGE No. |
| KIC | | 0 | 09 |

LOW PRESSURE CO2 SYSTEM REFRIGERATION DIMENSION

| CO2 VOLUME | REF. MODEL | Cooling Capacity | Compressor | BASE SIZE | Water Volume | Cooling IN/OUT |
|------------|------------|------------------|------------|--------------------|--------------|----------------|
| | | Kcal/h | Recipro | L x W x H | L/min | Sch80 |
| 10/15TON | KIC-RU37 | abt. 2,850 | OPTION | abt.1700x1150x1150 | 32 | KS-5K 32A |
| 18/20TON | KIC-RU55 | abt. 4,250 | | abt.1700x1350x1215 | 45 | KS-5K 32A |
| 25TON | KIC-RU75 | abt. 6,400 | | abt.1700x1350x1215 | 45 | KS-5K 40A |

상기외 탱크용량? OWNER의 요구에 준하여 용량 계산에 한함.

